

Waitākiri School

New Beginnings in 2015!



Inside

2015 PLANS

- Full details of the plans for our new school
- Details of the stages for the new build
- 2015 Campus organisation

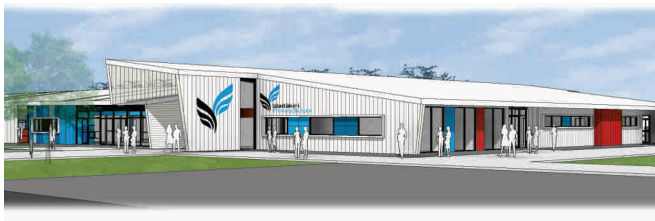
2014 ORGANISATION

Details of the 2014 organisation in preparation for our new build and to end the year on a positive note

CO-TEACHING INFORMATION AND Q&A's

We have also included updated information about how our school will work and responded to some Q&A's

The Board of Trustees, Ministry of Education and senior leadership are pleased to provide the updated and final plans for Waitākiri School. As many of you will be aware plans were revealed in May for the new school and building was to commence late in 2014. Since that time the Ministry updated the process to be used for rebuilds and a full review of the plans was undertaken. The Board of Trustees, principal and senior leadership have worked closely over five months to improve the design of the school, align the design to our emerging values and teaching beliefs and improve the overall long-term result for the school community. We are pleased to advise we are on track and our building programme will commence this year.

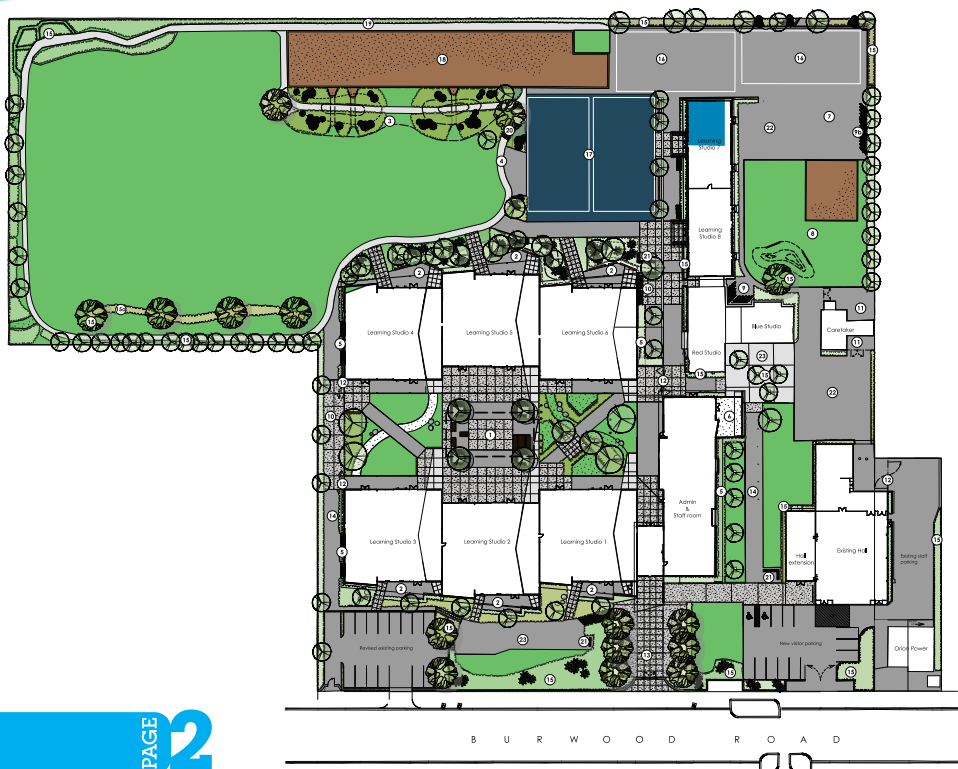


Hawkins Construction Ltd has been awarded the contract to build our new school with the design team from ASC Architects from the North Island working to create a state of the art school for our children and community.

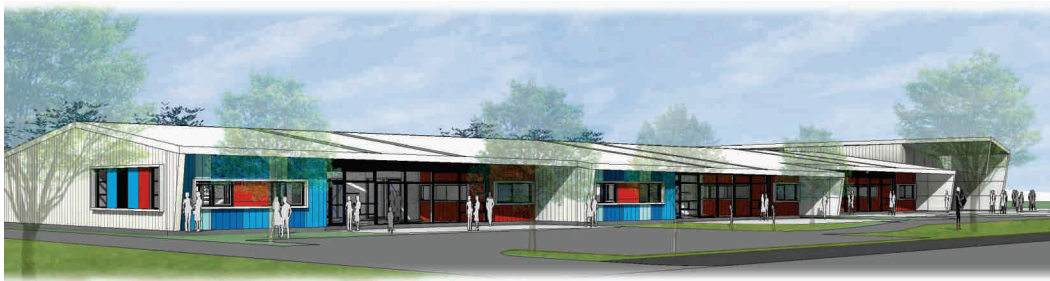
Page

2&3	Site Plan, our new school
4&5	New Learning Studios 1-6
6	Remodeled classrooms, Learning Studios 7 & 8
7	Administration and library space
8	Our school and community hall
9	Outdoor areas
10	Construction stages
11	Improvements since May 2014
12	End of 2014 year organisation
13	2015 Campus structure, Timelines and key dates
14	Modern learning environments, what it means to your child and you
15 & 16	Q&A, Questions and Answers
16	Feedback questionnaire

Site & Landscape Plan



A community focused collaborative learning environment!



Our new school will initially comprise of eight learning studios. Six learning studios will be in the brand new school and two in a redeveloped section of the existing school (learning studios 7 & 8).

Learning studios 7 & 8 will be our new entrant and Year 1 'transition to school' space. The learning studios in this area will accommodate approximately 55 children each and will have a special focus on the transition from early childhood education to Waitākiri Primary School.

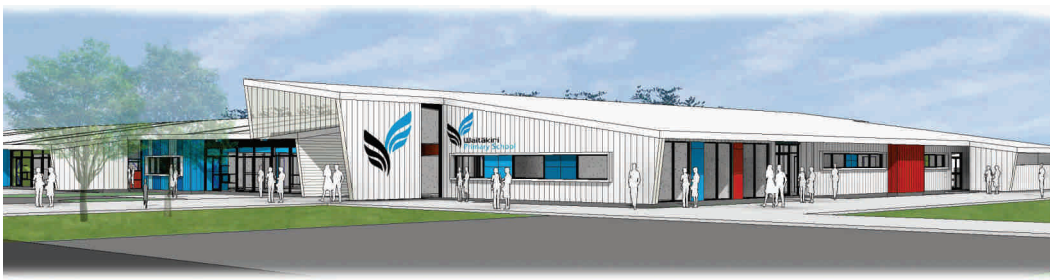
Landscape architects KamoMarsh have spent a lot of time investigating both campuses, consulting with leadership and creating plans that will ensure the new buildings have quality indoor - outdoor flow. The new school will have some really exciting play areas,

playgrounds, relocated alps and places where the enviro team can continue to develop our enviroschools programme. The team from KamoMarsh will start working with the enviro team very shortly to plan the actual details of the landscape plan.

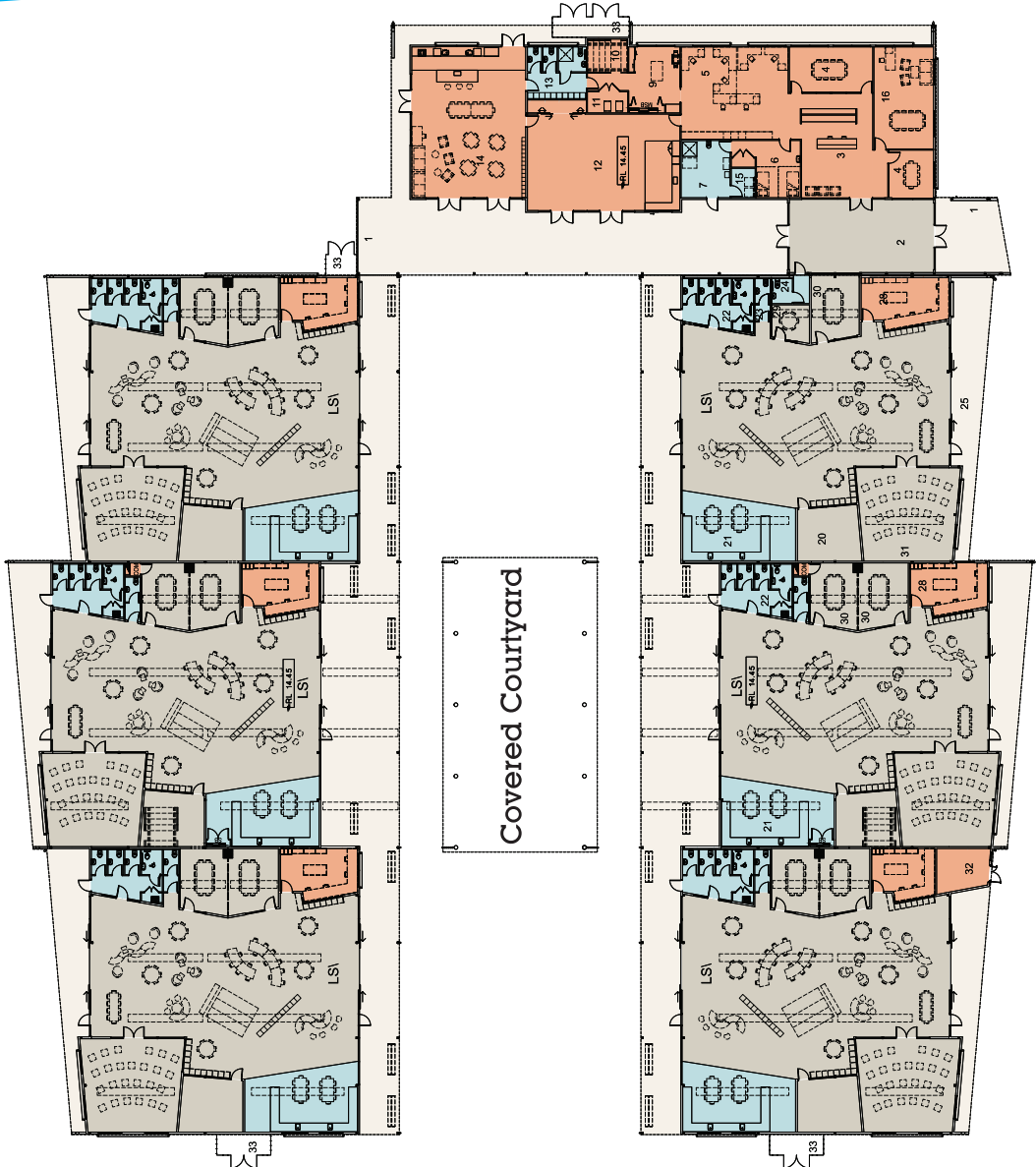
Due to clever design we will end up with more outdoor play area than originally expected. We also intend to explore the possibility of utilising Chartwell street park to extend our play areas even further!

A covered courtyard between the new buildings will give all weather access for outdoor learning and play.

Each learning studio also has it's own private courtyard for outdoor learning, together with internal and external access to toilets and wash basins.



Learning Studios 1-6





Learning Studios 1-6 Layout

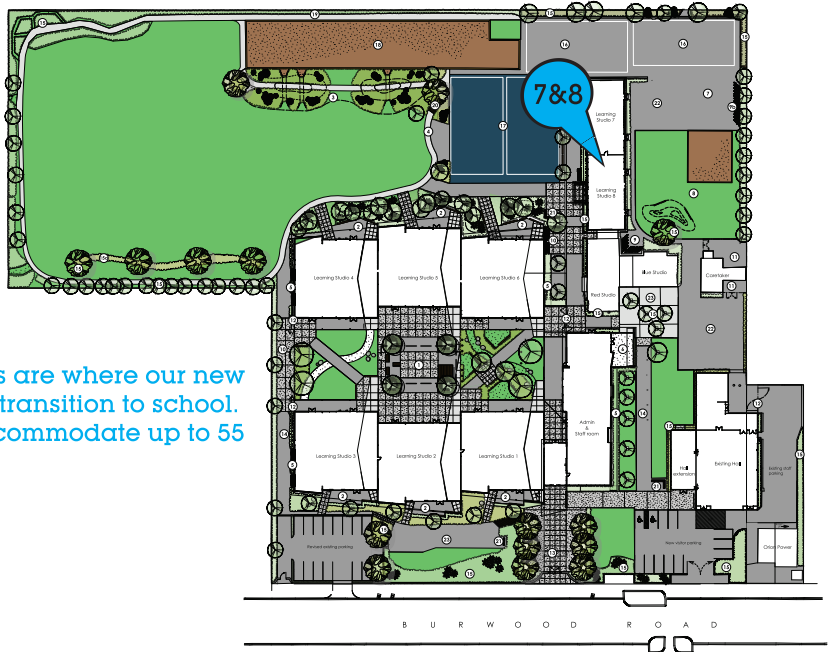
Learning Studios 1-6 will accommodate approximately 110 children each. These rooms provide significantly more square metres per child than a traditional class and include a range of breakout learning areas for small and large group teaching and learning. To give you a comparison you can see from the plans that the learning studios in spaces 1-6 are each bigger than our existing hall. Each learning studio is 470 sq metres, our hall is 320 sq metres!

The school design creates a warm welcome to children, parents, family and visitors through a foyer celebrating the past into a central covered courtyard, with a shared student and family library and café facility.

Each learning studio will be acoustically treated, double-glazed, air-conditioned and will have natural lighting. They also have a specialist area for the arts, science and technology, small and large group teaching, designated quiet areas, a teacher workroom and purpose built storage facilities.

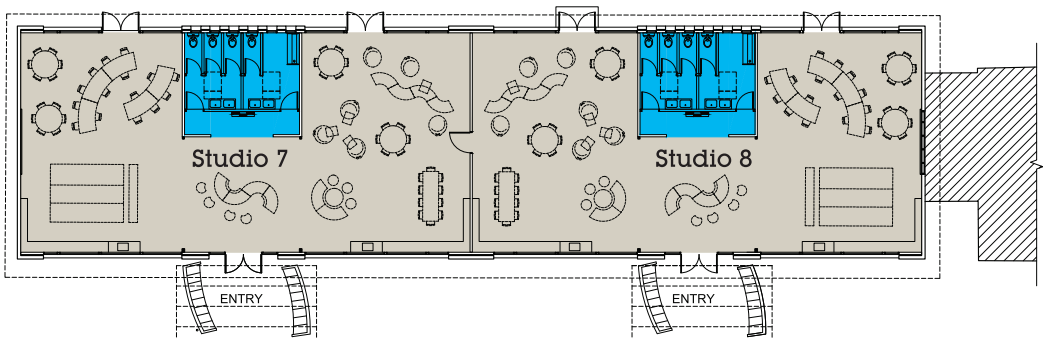
- 1** Toilets
- 2** Small Breakout rooms
- 3** Teacher Workrooms
- 4** Outdoor Learning Area
- 5** Large Learning Area
- 6** Large Breakout room
- 7** Storage
- 8** Wet Area Arts/Science/Tech

Learning Studios 7-8



These spaces are where our new entrants will transition to school. Each will accommodate up to 55 children.

Starting late November we will begin work on remodelling 4 classrooms and transforming them into collaborative teaching spaces ready for new entrants in 2015.



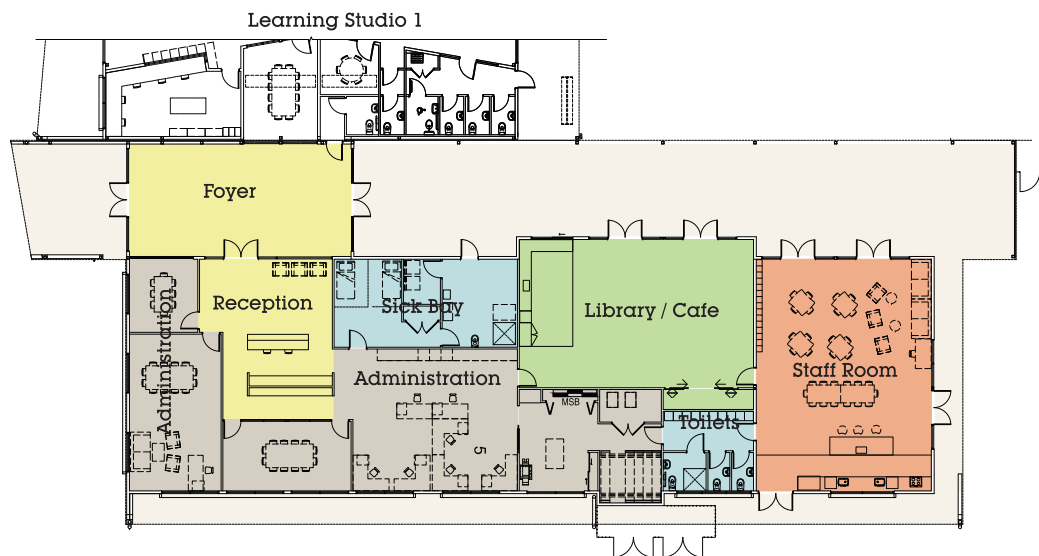
Administration and Library space

Our administration area will invite visitors and families in through an enclosed foyer to either our community space or reception. The foyer will feature history of our area and of both Burwood and Windsor Schools.

Visitors and families will be able to look into Learning Studio 1 and see learning in action and if they need to they can access reception and senior leadership. Moving through the foyer people will come out to the courtyard where they will be able to purchase real coffee from our library learning space.

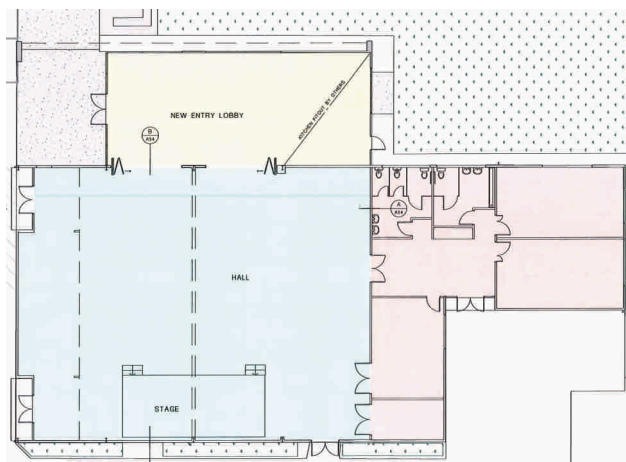
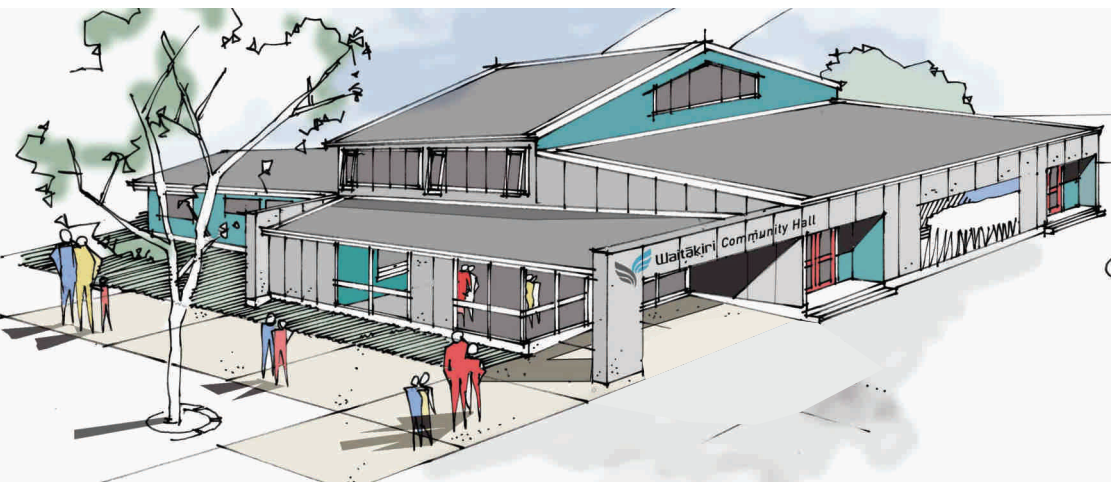
This space will provide the best in literacy resources and support for our children together with a collection for our pre school children and a selection of novels for parents free of charge (we built up a collection after the earthquakes and due to ongoing donations it keeps growing!).

Visitors and parents will be able to relax under the large verandahs of learning studios, sit at the outdoor seating outside the library and café area or under the covered courtyard. The final section of the administration area is the staffroom followed by access to learning studios 7 & 8 and the amazing playgrounds and outdoor facilities that will be created.



In addition to having a central library hub we will have a "floating collection" in each learning studio.

Our Community Hall



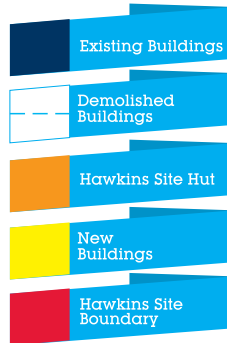
We will be extending our existing hall by adding 100sq metres and relocating the stage to the south side. This will allow the hall to have an appropriate street entrance, a community room (the extended area), more space for our families and children during learning celebrations and improved facilities for the school and community. We will also be refurbishing the hall and improving the kitchen and toilet facilities over time. The work the BOT has done in securing this space ensures our hall meets the needs of the school and wider community now and in the future.

Building our school, a two stage plan

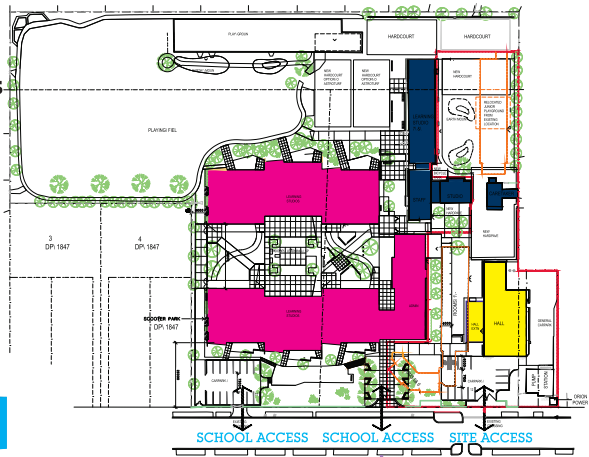
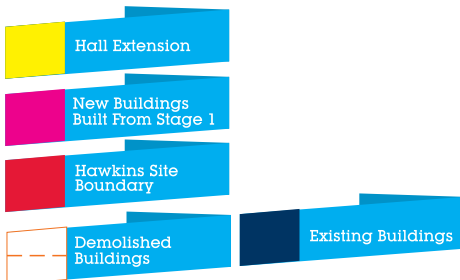
The two stage plan means the school will be ready for us to move into for a fresh start in 2016. To achieve this we need to give access to the contractors to start their work no later than 5th January 2015. This has some implications for our end of the year organisation, please read page 12 carefully.



Stage 1 takes place from 5th January to November 2015 and is the build of the new school.



Stage 2 is November 2015 to March 2016 and is the final stage with demolition of the existing classrooms and addition to the hall. During this stage the landscaping will also be completed.

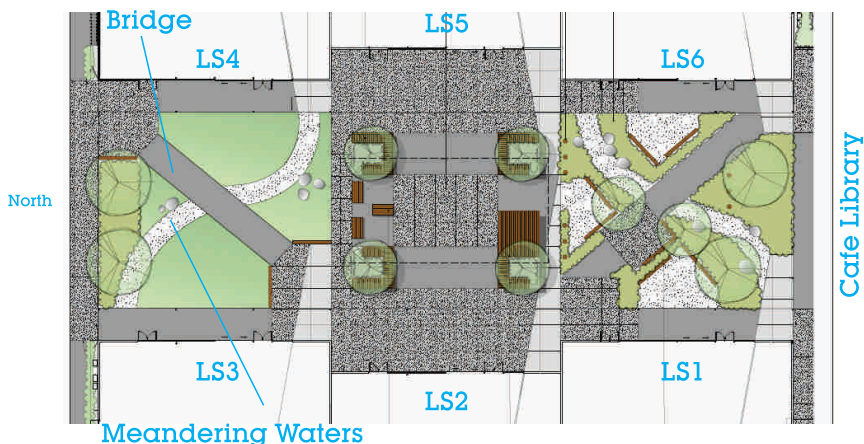


Our Outdoor Areas

Our new school will feature:

- A range of hard-court areas - some specifically allocated to our new entrants as their safe “home zone”
- A scooter track over the alps
- Quality playgrounds
- Edible garden areas
- Tracks for running, walking
- Mature trees for shade and climbing
- A range of grassed sports fields
- Meandering waterways (yes, these will be safe for children)
- Large sandpits and spaces where children can get dirty!
- An improved fitness trail
- Bridges, tunnels, mounds, nooks and crannies
- Native planting
- A strong ‘green’ look from the road
- Improved pedestrian access to school

Central Courtyard



Changes since May 2014

The work we have done since the initial plans were released has allowed us to create:

- A design that better utilises the site, freeing up more spaces for playing fields, playgrounds and community spaces
- Buildings that maximise the gross square metres allocated to the school resulting in larger learning spaces for children and teachers
- A permanent purpose built school for 650 while allowing for an initial roll of up to 750
- Improved landscape design taking into consideration the schools enviroschools project and the theme of 'Waitākiri' (meaning meandering waters)
- An improved plan for the rebuild with the project occurring in just two stages
- An improved time frame with the new school complete by November 2015 and the project fully complete by the end of term one 2016
- A larger community hall through the remodelling and extension of the existing hall
- Learning studios that are consistent with the schools collaborative approach to teaching and learning catering for approximately 110 children (our first plans had learning studios for up to 150 children)
- A community space within the school where parents can feel at home and part of the school on a daily basis
- The potential for use of Chartwell Street Park to maximise playing space for children
- A large covered outdoor learning area in the central community courtyard to encourage and enable outdoor learning and give shelter for parents at the end of each day
- Plans for the relocation and utilisation of the existing near new playground from the River Campus
- Allocation of additional resources to support learning in 2015, for access between campuses and to maximise the spaces and facilities on both campuses



End of year organisation & transitional support to 2015

School finishes on 12 December, alternate programme available 15-19 December

To allow the demolition of the existing buildings to start and the rebuild to be complete before the end of 2015 we need to have vacated the classrooms and relocated teachers into their new rooms by Wednesday 17th December. To achieve this formal classroom learning will finish on Friday 12th December. For families who need their children in school for the week of 15 to 19 December our afterschool care team, together with some staff will provide a programme and supervision for children from 8:25am to 2:55pm Monday to Thursday. On Friday 19 December school closes at 12:30pm. The normal OSCAR programme will run during this week.

Please complete the final section and return to it to the office if you need your child/children supervised in week 10

We will also be relocating four classes on the Wetlands Campus (Rooms 14,15,16 & 17) to allow Hawkins Contractors to start on the refurbishment of these rooms ready for the start of 2015.

Transition programme and support, visit to your child's 2015 class and teacher.

On Thursday 18th December between 4:00 and 6:00pm you are invited to come with your child to visit their 2015 classroom and teacher. This visit is very important (especially for our current year 2 and 3 children) to assist with their transition to a new class or campus. We also have a register of children who are more vulnerable or at risk and will ensure those needing extra assistance with transitions are supported.

If you are concerned about your child's ability coping with the change at the end of the year please advise your child's teacher in the first instance. We have counselors available and additional staff to support children in need. Those with special learning needs will also have learning assistant support as they transition. Finally, our open afternoon on Thursday 29th January between 4:00 and 6:00pm will assist with the transition. You can also help your child by reassuring him/her that they will be moving with friends and they will see teachers they know on both campuses. For current year 2 and 3 children regular visits to play at the River Campus over the holidays is also very beneficial.



2015 Campus Organisation



Our 2015 Campus organisation will see the school taking full advantage of the River Campus so the Wetlands Campus is freed up as much as possible to allow construction to take place. To achieve this all Year 3-6 children will be learning on the River Campus in 2015. Our Wetlands Campus will have our New Entrant, Year 1 and 2 children and they will be located in the two classroom blocks at the back of the school (currently rooms 14 to 21) away from the construction area. We will operate our OSCAR Programme on the Wetlands Campus in 2015 from the hall and rooms 3 & 4. Our office and reception on Wetlands will be from what is currently room 2 with access from the driveway between the hall and the classroom block.

In 2015 access to the Wetlands campus will be pedestrian access only at the hall entrance.

The Ministry has agreed to provide a daily bus between campuses in 2015 to assist with our OSCAR children getting to and from the River Campus.

While the decision to move Year 3 children to the River campus was not easy for the Board, the alternative (retaining Year 3 on the Wetlands Campus) would have seen the building project extend to four stages over a minimum of two years of building, relocation and demolition. The Board did not see this as in the best interest of the children, staff or community. We will do all that we can to ensure our junior children still have a great start to Waitākiri School.

Key Dates

Date	Action
12 Nov 2014	Rooms 14-17 relocate
17 Nov	Rooms 14 -17 remodeled to become learning studios 7 & 8
12 Dec	Formal learning ends for 2014
15 Dec	Supervised programme available for children Monday to Friday 19th 12:30pm Wetlands Campus hall
15 to 18th Dec	Staff relocating into 2015 classes, Wetlands relocation of office, admin etc
18 Dec	Between 4:00 and 6:00pm come along and meet your child's teacher in their 2015 classroom
19 Dec	School closes for 2014 at 12:30pm, children who had been in supervised programme to be collected from Wetlands
5 Jan 2015	Wetlands construction site handed over to Hawkins
29 Jan	Parents and children can again visit their 2015 teacher and classroom between 4:00 and 6:00pm
2 Feb	School commences for 2015
Nov	New build complete
Nov	Stage 2 commences (demolition of existing classrooms, extension of hall, landscaping)
Feb 2016	New school in use
End of Term 1 2016	Project complete, new school, fully landscaped, hall extended and refurbished fantastic learning environments. A job well done!

Co-teaching and teacher collaboration.

As you know on both campuses teachers have been collaborating with colleagues and your child will have been learning with another class and teacher for some or part of the day. We will continue to have teachers working together in 2015 in preparation for our collaborative spaces in 2016. This style of teaching and learning is a hallmark of Modern Learning Environments (MLE) and is a result of considerable research regarding the benefits of teacher collaboration (please see our website for an in-depth review of the literature in this area that was undertaken by Mr O'Reilly, Mr Bush and Miss Hygate this year). All new schools in New Zealand are built as collaborative learning environments. In Canterbury 80% of all schools will be MLE after the school rebuilds are complete. We are fortunate to be one of the first schools to have a total rebuild. The feedback from staff, children and parents has been very positive so far this year. When asked, children typically respond "I never want to go back to the old way of one teacher in a classroom!" most parents have been very surprised at the positive changes they have seen in their children as they become more self-managing (Waitākiri Learning Heroes) as they learn in this way.

What will a MLE and co-teaching mean for your child?

First and foremost the most important thing the school can do is focus on quality teaching and teachers. Once we have done this we then provide the time, space and resources for teachers to collaborate. The old adage "Two heads are better than one" is so true when teaching! Imagine your two best teachers at school now imagine them working together in one space, bouncing ideas off one another, working to their strengths, helping each other with areas of weaknesses, challenging one another and supporting one another. Your two best teachers just got even better!

Your child will:

- Have the opportunity to select where to learn and whom to learn with
- At times be told who to learn with and where to learn
- At times have some say in when to start learning and when to stop
- Have the opportunity to learn with different teachers
- Have the benefit of different interpretations of the curriculum
- Have the benefit of the expertise, strengths and passions of more than one teacher
- Get some consistent messages about expectations, learning and boundaries
- Find that there are many eyes in the room - instead of one teacher trying to see what is going on there will be multiple teachers and support staff all working together to create the best possible learning environment
- Become more organised (yes even your boys!)
- Take more responsibility for their learning as they work toward achieving goals

Q&A's

Why has it been so long since the May plans to get updates and why now, in November?

Both staff and community made it clear to the BOT and leadership they were not interested information unless it was set in stone. We have been working non-stop behind the scenes to get definitive information from the Ministry, to achieve the best possible outcome for the community and to have written confirmation. Written confirmation was finally received last week and since then we have been obtaining final drawings and details for this presentation.

Will the new school definitely be ready to start in 2016?

Yes, however the addition to the hall and the final landscaping will not be fully complete until the end of term one 2016.

Won't this be disruptive for the Year 1 & 2 children?

No, the construction site will be separated and secure. The children are quite removed from the construction zone and will happily get on with their learning and playing. They will also enjoy viewing the progress through specially designed viewing windows in the fencing.

When this all started we were told Year 1 - 3 children would be staying on the Wetlands Campus, why the change?

We need the building to be completed as swiftly as possible for a range of reasons (disruption to school, costs, consents). To achieve this we need to reduce the number of children on the campus while construction takes place. Moving the year three children to River ensures we can have the build done in one year. It also allows us to ensure the children on the Wetlands Campus are as removed as possible from the construction site and that contractors have secure access.

Why are we keeping the old hall?

If we had accepted the new hall proposal not only would the hall have been smaller but the project would have taken longer and the size of our learning studios would have been compromised. With this plan we keep a very large hall, get the job done on time and focus Ministry funds on the place where children do most of their learning - in the learning studios.

Why a bus next year and not in 2014?

Our needs have changed and the Ministry has acknowledged a bus is needed given all children in OSCAR will be on one campus (all children will need to get from OSCAR to their relevant campus in the morning and then back to OSCAR at the end of the day) Given the bus is running for OSCAR children it will also provide space for other children who need to travel between campuses in 2015.

Q&A's con't...

Q&A's Continue

Is it really necessary to stop formal learning on the 12th?

Yes, this is another very complex end of the year for the team. Every teacher on the Wetlands Campus is likely to be moving room as will many on the River Campus and some will be moving campus. We want to have rooms ready for Thursday 18th December between 4:00 and 6:00pm so that you and your child can visit their room and 2015 teacher. Our experience in 2013 tells us the logistics of relocating 30 teachers and their resources, together with all of the Wetlands Campus resources, the library, resource rooms administration block and every classroom will be very complex, time consuming and hard work!

Where is the pool?

With the Council decision to rebuild a pool in the east we no longer needed to provide our own pool, additionally the Ministry will not support funding of a school pool where other local provision is available. We will still have our portable pool in 2015 and we will work hard to keep it as long as possible!

If I move my child to another local school will this mean they are not involved in a building process?

All schools in the east are either being rebuilt, significantly developed or moderately redeveloped. Every school will have their challenges in the years ahead. Ours will be in 2015. It is right parents consider what is best for their child, our suggestion is be very careful about moving to get away from school redevelopment, 80% of Canterbury schools will be rebuilt over the next five years.



Return to office

End of 2014 year organisation:

If you need your child/children supervised in week 10 (15-19 December) please complete the details below and return the slip to the office:

Name of child/children: _____

Room number/s _____

Days you would like supervision

Monday Tuesday Wednesday Thursday Friday until 12:30pm (Please circle)

Other comments or questions: _____

Feedback:

We would like more information regarding how collaborative learning spaces work:

Yes No (Please circle)

If yes please identify how you would like to receive the information:

Consultation evenings: Notices: Information of the website: Facebook: (Please circle)

Comments or questions regarding the new school: _____
